



**THE KC SPORT, Boat & Outdoor Show returns to BARTLE HALL!**

**FEBRUARY 6-9**

**2025 Bartle Hall**

**THURSDAY 2pm-7pm**

**FRIDAY Noon-7pm**

**SATURDAY 10am-7pm**

**SUNDAY 10am-4pm**

Kansas City, MO  
**SPORT BOAT & OUTDOOR SHOW**



**PLUS:**

- **ATV dealers • Boat Dealers**
- **Guides & Outfitters • Travel**
- **Fishing Exhibits & More!**



**GREAT WAY TO MEET 15,000-20,000 CUSTOMERS IN ONE WEEKEND!**



**Featuring SHARK ENCOUNTER SHOWS!**



**SHOWS All 4 Days!**

**BOOTH PRICING:**

10x10 \$795  
 10x20 \$1,590  
 10x30 \$2,385  
 20x20 \$3,180

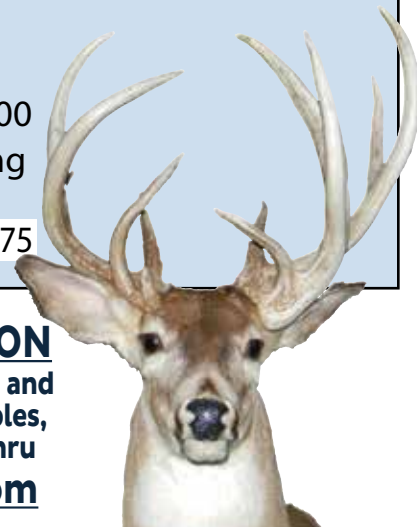
**BULK PRICING:**

10,000+ SF \$1.75/SF  
 7,500-9,999 SF \$1.95/SF  
 6,000-7,499 SF \$2.19/SF  
 3,500-5,999 SF \$2.29/SF  
 900-3,499 SF \$2.95/SF

Corners add \$175  
 End Cap add \$350  
 Island add \$700  
 Prime Location add \$300  
 Value Added Marketing \$129 (required)  
**DIRECT SALE VENDORS \$275**

**BOOTH INFORMATION**

Booths include 8' back drape and 3' side drape. Electricity, tables, chairs, etc. may be added thru [ExhibitorRentals.com](http://ExhibitorRentals.com)



**FOR MORE INFO: Jessica Ross 816-676-0686  
[JessicaR@rjpromotions.com](mailto:JessicaR@rjpromotions.com) • [KCMOSportshow.com](http://KCMOSportshow.com)**

**THE KC SPORT, Boat & Outdoor Show returns to BARTLE HALL!**



**FEBRUARY 6-9**

**2025 Bartle Hall**

**THURSDAY 2pm-7pm**

**FRIDAY Noon-7pm**

**SATURDAY 10am-7pm**

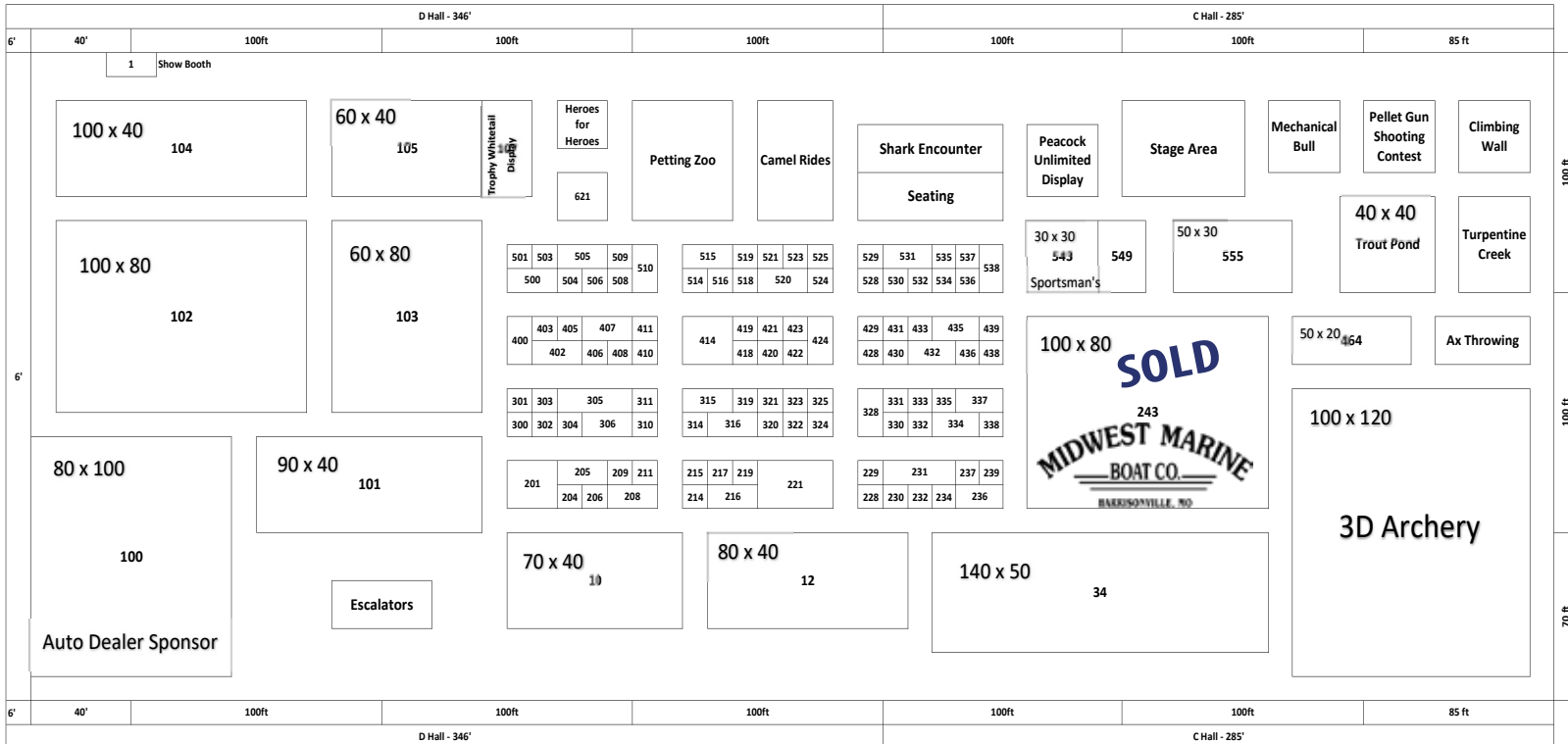
**SUNDAY 10am-4pm**

**Kansas City, MO**

**SPORT BOAT & OUTDOOR SHOW**

**MOVE-IN:**  
 Tuesday 8am-9pm  
 Wednesday 8am-9pm  
 Thursday 8am-11am

**MOVE-OUT:**  
 Sunday 4pm-10pm  
 Monday 8am-1pm



**RESERVE YOUR SPACE TODAY FOR THE 2025 KC SPORT, Boat & Outdoor Show**

Targeting thousands of mid- to upper income, married homeowners with spending power to help grow your business. Utilizing a marketing strategy perfected over years including TV, radio, billboards, newspapers, social media and FUN promotions! Expose your business to a year's worth of consumers in one exciting weekend!

**Any boats/vehicles inside building may have NO more than 1/4 tank of fuel per Fire Marshall**

**FOR MORE INFO: Jessica Ross 816-676-0686  
 JessicaR@rjpromotions.com • KCMOSportshow.com**

# SPONSORSHIP OPPORTUNITIES

**THE KC SPORT, Boat & Outdoor Show returns to BARTLE HALL!**



Kansas City, MO **SPORT** **BOAT & OUTDOOR** **SHOW**

**FEBRUARY 6-9**  
**2025 Bartle Hall**

**THURSDAY 2pm-7pm**

**FRIDAY Noon-7pm**

**SATURDAY 10am-7pm**

**SUNDAY 10am-4pm**

*One of the BEST ways to get the recognition your business deserves is through our SPONSORSHIP OPPORTUNITIES! Our program offers several different levels of participation and ways for your business to benefit.*

*For a more detailed list of what each level includes, contact us today. The sooner you sign up, the more exposure your company receives!*

*\*All sponsorship inclusions are time sensitive to production deadlines.*

**For a more detailed list of benefits for Each Sponsorship Level, please contact:**

**Jessica Ross 816-676-0686**

**JessicaR@rjpromotions.com**

**KCMOsportshow.com**

■ **TITLE SPONSOR: \$19,000 *EXCLUSIVE!***  
**"The {Company Name} KC SPORT, Boat & Outdoor Show"**

**Company Logo/Mention in All Media**

- TV screens at show
- Cover of show program
- Event materials and marketing collateral
- Show website & social - **upgraded listing**
- Up to 4 booth spaces (2 corners + 2 standard)

■ **PRESENTING SPONSOR: \$8,000 *6 available***  
**Company Logo/Mention in rotated media**

- Event materials and marketing collateral
- Show website & social - **upgraded listing**
- Up to 2 booth spaces (1 corner + 1 standard)

■ **GOLD SPONSOR: \$5,000 *2 available***  
**Company Logo:**

- Event materials and marketing collateral
- Show website & social - **upgraded listing**
- Up to 2 booth spaces at event

■ **SILVER SPONSOR: \$3,500 *4 available***  
**Company Logo:**

- Event materials and marketing collateral
- Show website & social - **upgraded listing**
- Up to 1 booth space at event

■ **BRONZE SPONSOR: \$1,500 *6 available***  
• Business name on event materials  
• Show website & social - **upgraded listing**

■ **EXHIBITOR LOUNGE SPONSOR: \$3,500**  
**Company Logo:**

- Reception signage
- Show program
- Exhibitor communication
- Show website & social - **upgraded listing**

■ **PROGRAM SPONSOR: \$2,500**  
**Company Logo:**

- Show program - **Exclusive Full Page**
- Show website & social - **upgraded listing**

■ **TICKET SPONSOR: \$2,500**  
**Company Logo:**

- Show program
- Preprinted VIP and FREE show tickets
- Show website & social - **upgraded listing**

■ **TOTE BAG SPONSOR: \$2,500**  
**Sponsor supplies totes**

- Show program
- Show website & social - **upgraded listing**

■ **Kids Square Entertainment SPONSOR: \$1,000 *Limit three non-competing businesses***

- Company Logo:
- Show program
- Banner in Kids Square
- Show website & social